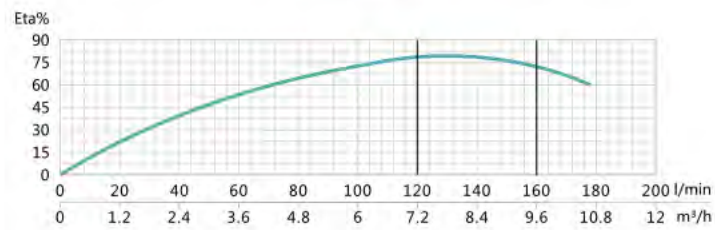
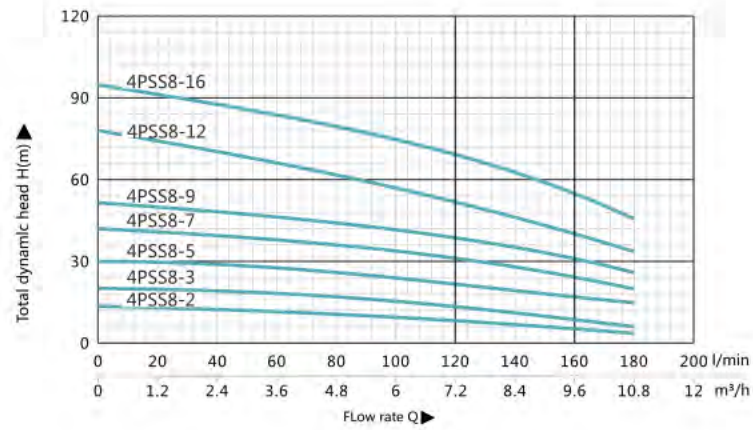


# 4PSS8

# Panel Connection



## 4PSS8

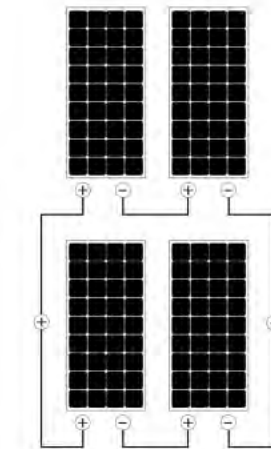
Model	Voltage DC(V)	Power		Delivery n≈3450 1/min																					
		KW	HP	Q	m <sup>3</sup> /h	0	1.2	2.4	3.6	4.8	6	7.2	8.4	9.6	10.8										
4PSS8-2	36/48	0.55	0.75	Q	l/min	0	20	40	60	80	100	120	140	160	180										
4PSS8-3	48	0.75	1	H(m)												20	20	19	18	17	15	13	11	8	6
4PSS8-5	72	1.1	1.5	H(m)												30	28	26	25	24	23	22	20	17	14
4PSS8-7	96	1.5	2	H(m)												42	39	37	35	34	32	31	28	24	20
4PSS8-9	156	2.2	3	H(m)												51	49	47	45	44	42	40	36	30	26
4PSS8-12	216	3	4	H(m)												72	67	63	60	58	55	53	48	42	34
4PSS8-16	276	4	5.5	H(m)												95	90	85	81	77	74	71	63	55	46

Model	Power KW	Dimensions(mm)					Weights(kg)					DN
		M	M1	P	T	T1	M	M1	P	T	T1	
4PSS8-3	0.75	175	287	332	507	619	6.3	6.7	2.1	8.4	8.8	2"
4PSS8-5	1.1	190	300	412	602	712	6.9	7.2	2.2	9.1	9.4	2"
4PSS8-7	1.5	225	330	497	722	827	8.5	8.5	2.5	11	11	2"
4PSS8-9	2.2	255	350	582	837	932	10	10.5	2.9	12.9	13.4	2"
4PSS8-12	3	285	430	712	997	1142	11.9	12.5	3.5	15.4	16	2"
4PSS8-16	4	305	460	880	1185	1340	13.9	14.5	4.1	18	18.6	2"

## 4PSS8-3:

280W Panel, 4pcs in 2 line

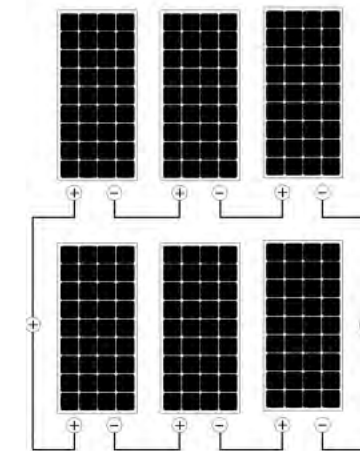
Panel power: 900W-1100W  
Panel voltage: 58V-75V



## 4PSS8-5:

280W Panel, 6pcs in 2 line

Panel power: 1500W-2000W  
Panel voltage: 87V-110V



## 4PSS8-7:

280W Panel, 8pcs in 2 line

Panel power: 2000W-2500W  
Panel voltage: 115V-150V

