



High Speed Door

(Air Bag Safety)

Product Description

High-Speed Shutter Door is an electrically driven fast action roller shutter, developed for high intensity use and is suitable for interior applications. Our shutter doors are used in commercial and industrial buildings for purposes of zoning, privacy/confidentiality and climate control.

Features

- Flexible design allows customers to select the best size according to their requirements
- Safety mechanisms
- Control options : photocell, push button, pull switch
- Interlock switching can be set up when used with a second shutter door
- Optional connection to turning lamp, traffic, lights, etc
- Timer control also available

Applications

An excellent choice for separating zones in warehouses, industrial labs, commercial kitchens, clean rooms, and painting rooms. Kitchens, clean rooms, and painting rooms. Factories or doorways in warehouses.

Endurance

Use: Suitable for intensive and continuous use applications.

Solidity: The frame / canopy is made from 2mm galvanised steel, making the structure very strong / sturdy and self supporting - with no welded parts.

Lifetime: Tested in working conditions to over 1.0 million cycles, with excellent results.

Resistance: Wind load and differences in pressure up to Class 2 the fully closed position. Operational wind loads will vary dependent on door size & installation accuracy.

Design

Design: Simple, basic, robust and functional design.

Compactness: Ideal for applications with reduced side room and headroom.

Vision: 1 row of rectangular vision panels with rounded corners are supplied as standard. Additional windows are available on request.

Customisation: Silk screen printing, sticker and logo's on curtains are available on request.





High Speed Door

Maximum Dimensions

6000mm x 5400mm WxH

Opening Speed

1.0-1.5 m/s

Closing Speed

0.5-0.8 m/sec

Frame

2mm thick galvanised steel. Stainless steel 304 or 316 as an optional extra..

Roller

Galvanised steel

Motor

Motor gear 2 HP with encoder

Guides

Very high modular density polyethylene, with very low friction coefficient.

Curtain

PVC Curtain use high-density polyester fabric 1.2mm thickness and self-extinguishing rate : DIN4102 Yellow.1200 g/m2 density. Inspection Window 1.2 mm Crystal PVC Fabric Horizontal and verticaltransparent sections are available.

Control Board

220V single phase with inverter.

Control Box

Size : 300x400x150 mm. Painted steel or Stainless Steel 304 (Optional) housing Control box with selector auto/manual

Safety

Air Bag & One pair's of safety sensor installed 500 mm from floor level when door's soft lower edge impacts and object while closing a sensor sends a radio signal to the control box and the door immediately opens

Wind Load

for door up to 3500 mm. wide-CLASS3 (120km/h) up to 4500 mm. wide-CLASS2 (90km/h)

Guide

Brush seal

Operating Life

1,500,000 cycles

Power Supply

220V/50Hz,1Ph

Accessories

Various accessories available e.g remote control, radars, induction loop cards, additional push buttons etc.

Curtain Colour Chart



RAL 9010
White



RAL 1013
Beige



RAL 5015
Light Blue



RAL 5010
Dark Blue



RAL 1003
Yellow



RAL 2004
Orange



RAL 7035
Light grey



RAL 7038
Medium grey



RAL 7037
Dark grey



RAL 6026
Green



RAL 3002
Red



RAL 9006
Silver



RAL 9004
Black

Curtain Repairs

We can repair all major brands of High Speed Doors. Patch repair and full curtain replacements are available at competitive prices at our off site facility.

Please note: For all curtain repairs a drawing will need to be supplied for us to get a close replica of the existing curtain.



086-408-3046



hkd.napatcha@gmail.com



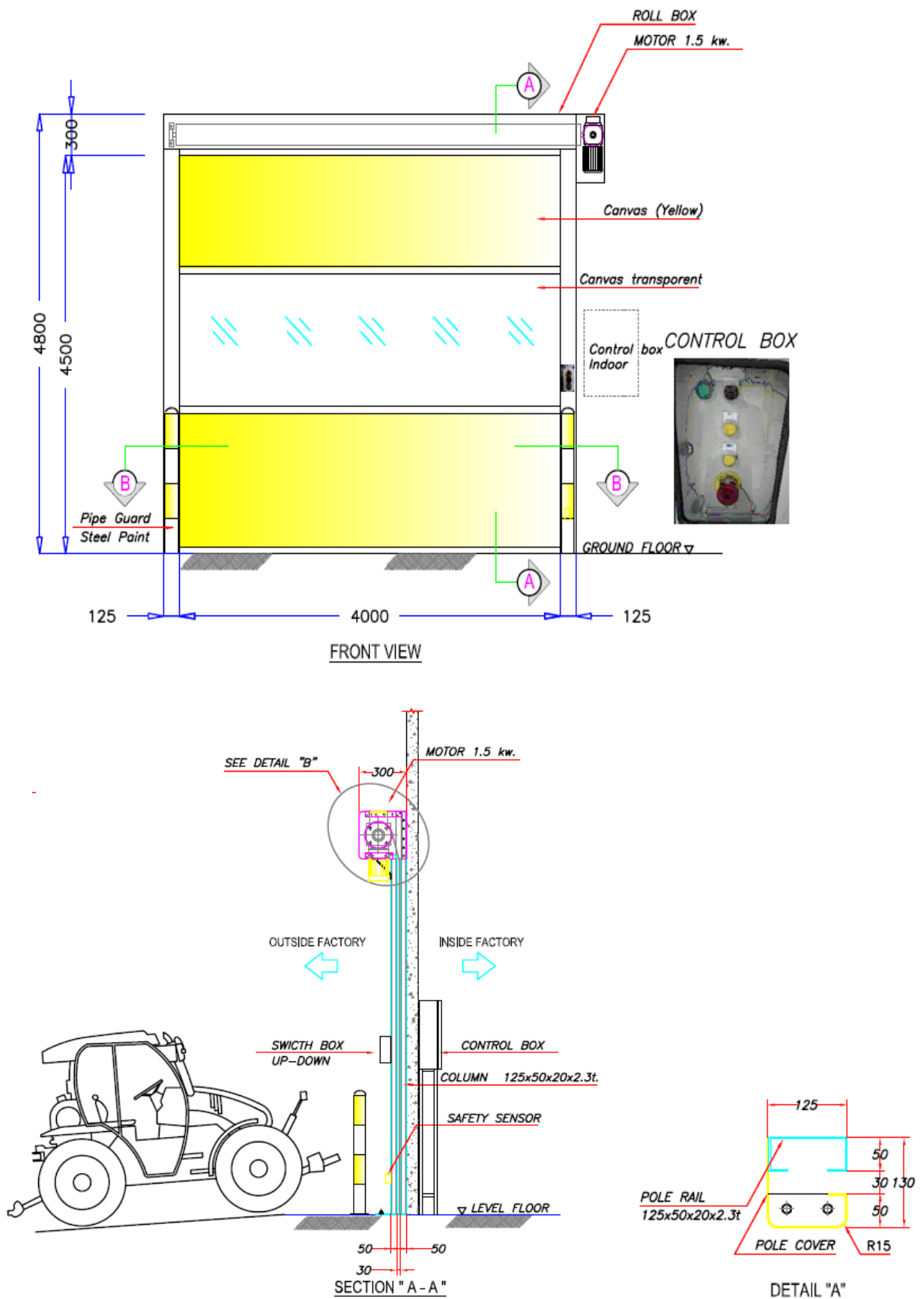
www.ประตูระบบอัตโนมัติ.com

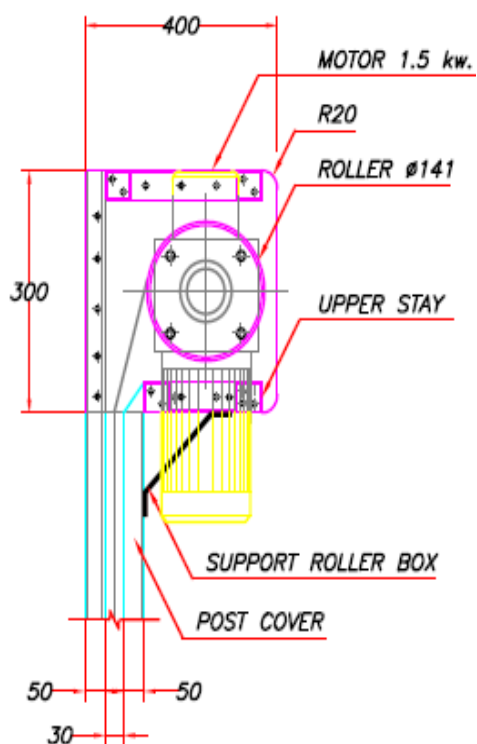
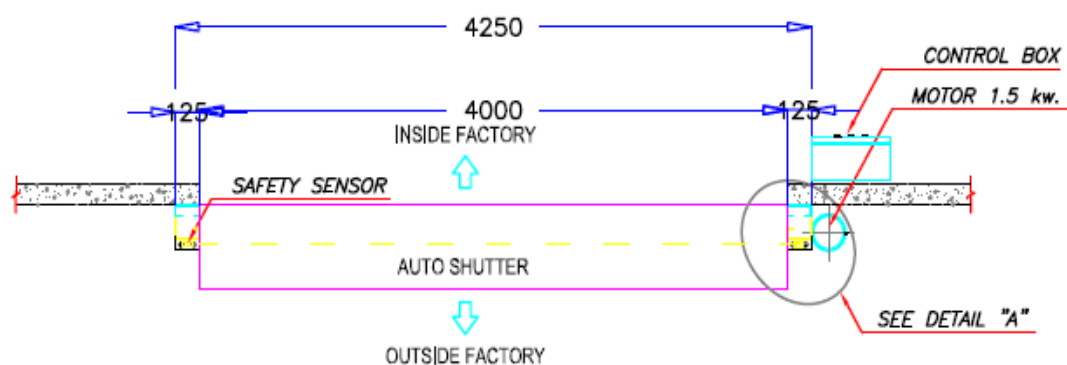


High Speed Door

Technical and Operating Specs

Application	universal -in door openings in industrial, storage, and commercial facilities
Maximum Size, WxH	6000 x 5400 mm
Wind Load	for doors up to 3500 mm wide -CLASS3 (120 km/h) up to 4500 mm wide -CLASS2 (90 km/h)
Opening Speed	1.0 -1.5 m/s
Closing Speed	0.5-0.8 m/s
Working Temperature Range	from -15 to +70C -if drive is installed indoors from -5 to +70C -if drive is installed outdoors from -35 to +70C -with drive and side frame heating system
Hardware Materials	frame and side -galvanized steel or stainless steel SUS304,316 (optional) drive shaft -galvanized steel track guides -extruded polyethylene curtain -light proof reinforced PVC, 1200 g/m density Window 1.2 mm Crystal PVC Fabric
Control Box	painted steel or stainless steel SUS304 (optional) housing size- 300 x 400 x 150 mm; variable speed drive
Drive System	supply voltage- 220 V/50 Hz power- 1.5KW final shaft position indicated by encoder
Safety Features	one pair of safety sensor installed 500 mm from floor level and the second one (optional) -at top of side frames to correct opening errors caused by improper unrolling of door curtain; when doors soft lower edge impacts an object while closing a sensor sends a radio signal to the control box and the door immediately opens (optional); door will open automatically about 2000 mm if a power failure occurs via a counterweight (optional feature)
Power Supply	220V/50 HZ, 1Ph.
Operating Life	1500000 cycles

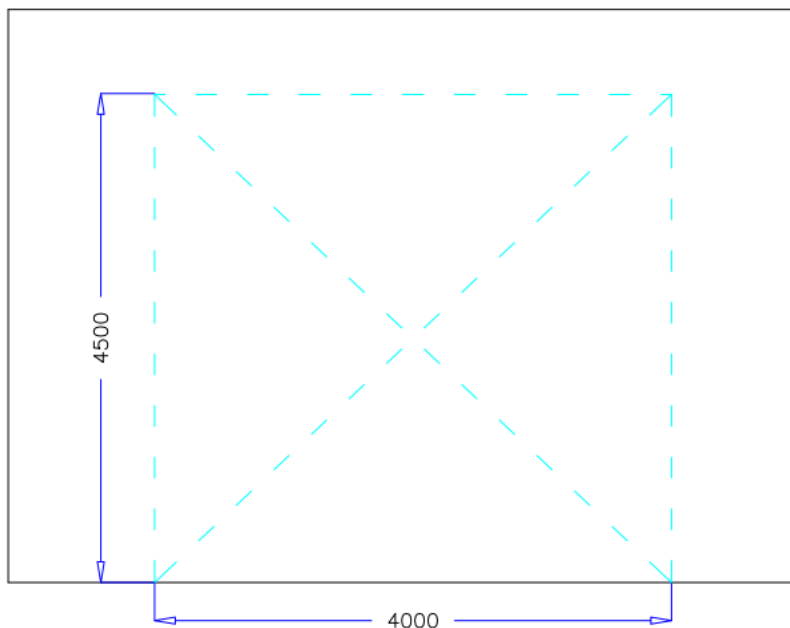




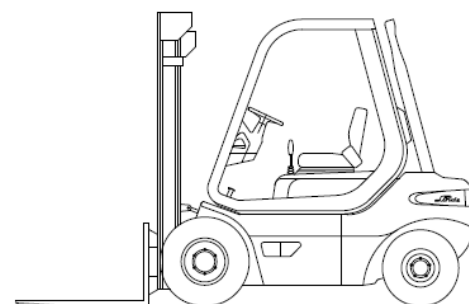
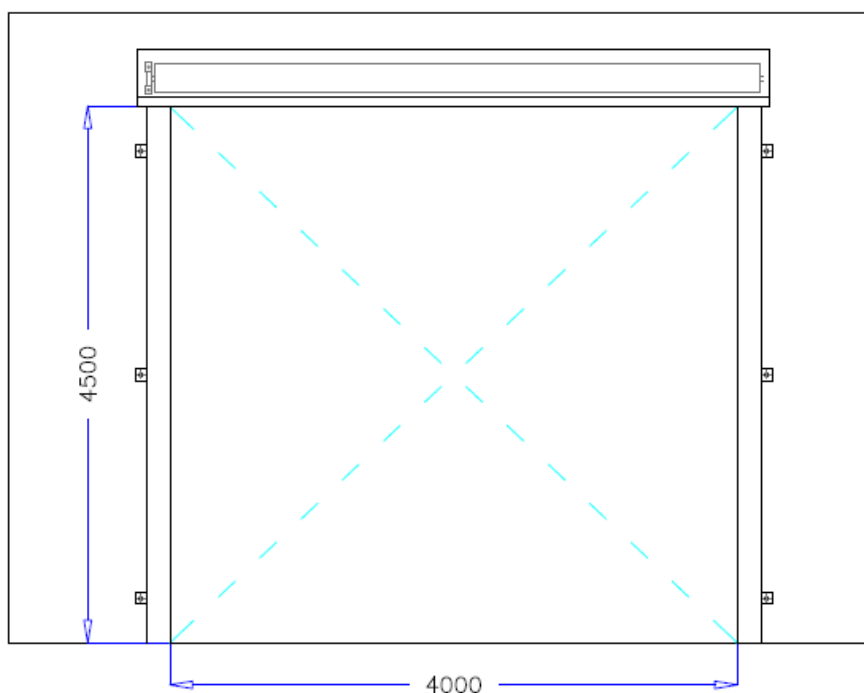


High Speed Door

Installation Guide



1. Check size opening

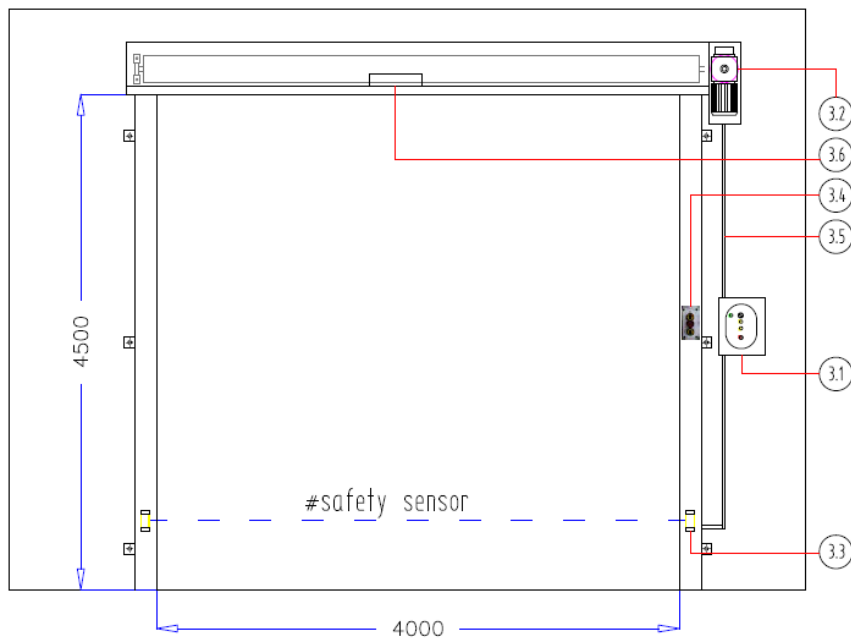


#supply by owner

2. Installation roll box with canvas by forklift at H = 4.5 m.

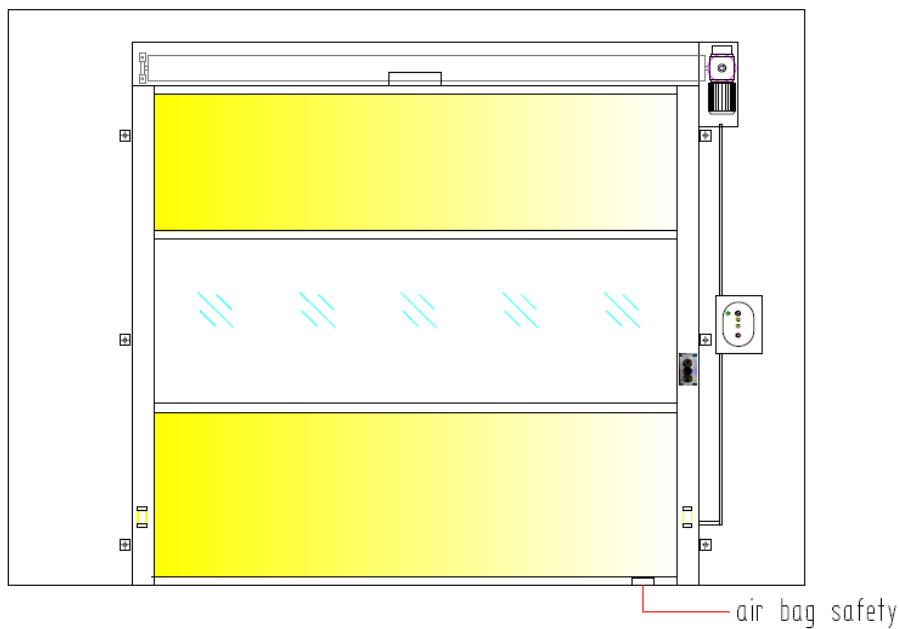
2.1 Installation Vertical trunk railway left-right side by puk-blot M10

Installation Guide



3. Electrical work

- 3.1 Control Box
- 3.2 Motor gear
- 3.3 Safety sensor
- 3.4 Push switch up-down-pause
- 3.5 PVC.wire duct
- 3.6 Photo cell sensor



4. Comissioning test

- 4.1 Setting canvas level up-down
- 4.2 Setting speed canvas rolling
- 4.3 Safety sensor all testing
- 4.4 Detector (A) Photo sensor testing
- 4.5 Detect (B) Push switch up-down-pause testing
- 4.6 End process