

## [Course Number : 1195] 7-Days Golden Route, Nikko, and Kamikochi

Nikko, Karuizawa, Kusatsu, Matsumoto, Kamikochi, Takayama, Nara, Kyoto & Osaka Tour (Round Trip from Narita to Osaka)



### Day 1

Meal B : x L : x D : H

09:00	Narita Airport Arrival
11:10-12:40	Transfer To Ashikaga Flower Park
14:10-15:40	Transfer To Nikko Toshogu Shrine
16:50	Hotel Check-In : Kanaya Hotel Kinugawa

### Day 1: Kanaya Hotel Kinugawa (Onsen & Dinner)

**Web Site:** <https://kinugawakanaya.com/> **Room:** Japanese Style Room with Outdoor Bath 66 Sqm.

Kinugawa Kanaya Hotel is located in Nikko and about a 3-minute walk from Kinugawa Onsen Station. The guest rooms feature free WiFi and LAN internet. Guests may enjoy wearing traditional yukata robes, available in each guest room. Facilities include a communal bath and an open-air bath. The hotel possesses 41 guest rooms.

### Day 2: Ryokan Tokinoniwa (Onsen & Dinner)

**Web Site:** [www.hotespa.net/hotels/tokinoniwa](http://www.hotespa.net/hotels/tokinoniwa)

**Room:** Japanese Style Room with Open-Air Bath 36 Sqm.

This new ryokan opens in July 2010! Overlooking the Kusatsu Onsen area, Tokinoniwa, which is floored entirely with tatami, features Kusatsu's silky, soothing hot springs



### Day 2

Meal B : H L : x D : H

08:00	Hotel Check-Out
11:20-14:20	Transfer To Karuizawa Prince Shopping Plaza
14:50-15:30	Transfer To Karuizawa Shiraito Falls
15:40-16:40	Transfer To Onioshidashi Park
17:30	Hotel Check-In : Ryokan Tokinoniwa

with two large public baths, three private reservable baths, and ensuite open-air baths attached to every guest room.



### Day 3

Meal B : H L : x D : H

08:30	Hotel Check-Out
11:40-13:10	Transfer To Matsumoto Castle
14:40-16:40	Transfer To Kamikochi
16:50	Hotel Check-In : Kamikochi Lemeiesta Hotel

### Day 3: Kamikochi Lemeiesta Hotel (Onsen & Dinner)

**Web Site:** [www.lemeiesta.com](http://www.lemeiesta.com) **Room:** Twin Room 24 Sqm.

Kamikochi Shimizuya Hotel is an elegant spa and resort hotel which reminds the impression of Europe, and facing the emerald green-colored Azusa River. Every room offers the sumptuous view of the beautiful mountains. The dinner is served full course of French cuisine.

### Day 4

Meal B : H L : x D : x

08:30	Hotel Check-Out
09:50-10:20	Transfer To Takayama Jinya
10:30-11:30	Transfer To Takayama Old Town
12:30-14:00	Transfer To Shirakawa Village
15:10-16:00	Transfer To Gujo Hachiman Castle
17:20	Hotel Check-In : Nagoya Marriott Associa Hotel



### Day 4: Nagoya Marriott Associa Hotel

**Web Site:** [www.associa.com/nma](http://www.associa.com/nma) **Room:** Deluxe Twin 38 Sqm.

Often regarded as one of the 18 best hotels in Japan, we are ideally located in the heart of the city, easily accessible from the Central Japan International Airport. Served by a wide array of transportation network, it is right above 11 floors of JR Takashimaya Dept Store and 2 floors of gourmet outlets.

### Day 5: Four Seasons Hotel Kyoto

**Web Site:** [www.fourseasons.com/jp/kyoto](http://www.fourseasons.com/jp/kyoto) **Room:** Twin Room 46 Sqm.

Nestled in a 12th-century, Shakusuien ikeniwa (pond garden), just minutes from downtown and surrounded by centuries of history, is a modern oasis of serenity and style: Four Seasons Hotel Kyoto. For the Brasserie deck at the water's edge, Four Seasons Hotel Kyoto opted for our collection Mood designed by Studio Segers.



### Day 5

Meal B : H L : x D : x

08:30	Hotel Check-Out
10:00-10:50	Transfer To Igaryu Ninja Museum
12:00-14:00	Transfer To Todaiji Temple
15:00-16:00	Transfer To Fushimi Inari Shrine
16:10-17:40	Transfer To Kiyomizu Temple
17:40	Hotel Check-In : Four Seasons Hotel Kyoto

### Day 6

Meal B : H L : x D : x

08:30	Hotel Check-Out
09:00-10:00	Transfer To Ryoanji Temple
10:10-11:10	Transfer To Kinkakuji Temple
11:30-12:00	Transfer To Togetsu Bridge
14:20-15:30	Transfer To Osaka Castle (Outside)
15:40-17:40	Transfer To Shinsaibashi Shopping
17:50	Hotel Check-In : Swissotel Nankai Osaka



### Day 6: Swissotel Nankai Osaka

**Web Site:** [www.swissotel-osaka.co.jp](http://www.swissotel-osaka.co.jp) **Room:** Twin Room 32 Sqm.

Swissotel Nankai, Osaka is a deluxe hotel ideally located in the heart of Namba, Osaka's most exciting entertainment, shopping and dining district. The hotel sits above Nankai Railway's Namba Station offering direct train access to Kansai International Airport and all major tourist attractions such as Kyoto, Nara and Kobe are within easy reach.

### Day 7

Meal B : H L : x D : x

Morning	Hotel Check-Out Individually (No Vehicle Transfer)
---------	--

### Tour Price in Japanese Yen (This rate is based on 2 adults sharing in 1 room.)

PAX	2	3	4	5	6	7	8
Adult	830,000	637,000	540,000	482,000	444,000	416,000	396,000

### Websites of Visiting Places

1. Kiyomizu Temple: <http://www.kiyomizudera.or.jp/>
2. Ryoanji Temple: <http://www.ryoanji.jp/top.html>
3. Kinkakuji Temple: [http://www.shokoku-ji.jp/k\\_access.html](http://www.shokoku-ji.jp/k_access.html)
4. Togetsu Bridge: <https://www.japan.travel/en/spot/72/>
5. Osaka Castle: <http://www.osakacastle.net/>
6. Shinsaibashi Shopping: <http://www.shinsaibashi.or.jp/>

## Information on Visiting Places

**Ashikaga Flower Park:** [www.ashikaga.co.jp/index.html](http://www.ashikaga.co.jp/index.html)

Ashikaga Flower Park features lots of blue, white and pink fuji, as well as yellow laburnum (Japanese: kingusari) that look like yellow colored fuji. Besides the fuji, you will find many other flowers, restaurants and a shop selling plants and local products. The entrance fee varies quite strongly depending on the season's beauty.



**Nikko Toshogu Shrine:** [www.toshogu.jp](http://www.toshogu.jp)

Special features of the shrine complex is the use of paths and stairways that follow the natural topography of the site, allowing the arrangement of the shrine buildings in a pleasing balance to create a solemn, religious atmosphere. The buildings are lacquered and decorated with vibrant colors, and the pillars and other structures.



**Karuizawa Prince Shopping Plaza:** [www.karuizawa-ppsp.jp](http://www.karuizawa-ppsp.jp)

Almost every major brand of fashion and clothing design is represented at Karuizawa Prince Shopping Plaza in over two hundred stores, set in beautiful, sylvan surroundings, just minutes walk from Karuizawa Station. The stylish, 26-hectare Karuizawa Prince Shopping Plaza.



**Karuizawa Shiraito Falls:** [www.town.karuizawa.lg.jp/toppage/000000000000/APM03000.html](http://www.town.karuizawa.lg.jp/toppage/000000000000/APM03000.html)

Shiraito Falls is found deep in the mountains of Karuizawa. Many travelers from within Japan and from abroad gather here to see this beautiful scenery. The Shiraito waterfall is 3 meters high and 70 meters wide – its charm is found in its width.



**Onioshidashi Park:**

[www.princehotels.co.jp/amuse/onioshidashi](http://www.princehotels.co.jp/amuse/onioshidashi)

The Park besides presenting the opportunity to take a closer look at the volcanic rocks of various curious shapes, Onioshidashi Park also offers nice views looking over nearby towns and of Mount Asama on clear days. Located at the center of the park stand a temple dedicated to the Buddhist Goddess of Mercy Kannon.



**Matsumoto Castle:** [www.matsumoto-castle.jp](http://www.matsumoto-castle.jp)

Starting from Fukashi Castle which was built during the Eisho period of the Warring States period, Matsumoto Castle has become a National Treasure as the oldest extant five structure/six story castle in Japan. Its contrasting black and white, against the shining Japanese Alps.



**Kamikochi:** [www.kamikochi.or.jp](http://www.kamikochi.or.jp)

Japan is full of beautiful contrast and lives in tension with itself. One of the most beautiful tensions hangs between the booming urban life in big cities and the rest of Japan where a large population lives in harmony with nature, enjoying the seasons in rural Japan.



**Takayama Jinya:**

[www.pref.gifu.lg.jp/kyoiku/bunka/bunkazai/27212/](http://www.pref.gifu.lg.jp/kyoiku/bunka/bunkazai/27212/)

The building complex was in official use until 1969, and is now open to the public as a museum. It includes various nicely maintained tatami mat rooms that once served as offices, conference rooms, guest rooms and residential space. There is also an interesting interrogation room. Beside the main building stands a large storehouse built in the 1600s.



**Takayama Old Town:** [www.city.takayama.lg.jp](http://www.city.takayama.lg.jp)

Southern half of the old town, especially the Sannomachi Street, survives in a particularly pretty state with many old homes, shops, coffee houses and sake breweries, some of which have been in business for centuries. The shops in the area are typically open daily. Several homes in the old town open their doors to the public.



**Shirakawa Village:**

<http://shirakawa-go.org/kankou/area01/>

Shirakawa-go (Shirakawa Village) is a Japanese mountain settlement in what was once considered a wild and unexplored region. Because of the area's natural environment, with high mountains and heavy snowfall, interaction with neighboring regions was limited.



**Gujo Hachiman Castle:**

<http://castle.gujohachiman.com/>

The castle has fantastic views of the surrounding countryside from Gujo Hachiman Castle, the interior of which is now a museum with displays of samurai armor, swords and ornate byobu (folding screens). Of special note is a suit of samurai armor (samurai yoroi) that was passed down in the Aoyama clan and the kin-no-dohyo, a gift to the Aoyama.



**Igaryu Ninja Museum:** [www.iganinja.jp](http://www.iganinja.jp)

In order to prevent having explosives manufacturing technology stolen by enemies, this typical ninja house had protections such as set traps and fake hallways. The ninja house is a simple farm dwelling, but has surprises, escape routes, hidden doors, and places to hide swords, and the above traps and trickery.



**Todaiji Temple:** [www.todaiji.or.jp](http://www.todaiji.or.jp)

Tōdai-ji today preserves many precious cultural treasures from the temple's past, yet it also is a treasure house of traditional Buddhist rituals such as the Shuni-e held at the Nigatsu-dō. Many people from throughout Japan and the world visit the temple to pay their respects.



**Fushimi Inari Shrine:** <http://inari.jp/>

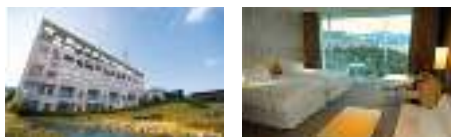
In the 1300 years since its establishment in 711AD, people have gathered here to pray for bountiful harvests, business prosperity, the safety of their home and family and the fulfillment of all kinds of other wishes. In recent years, the shrine's Japanese worshippers have been joined by overseas visitors coming to pray or tour the shrine.



## [Course Number : 1196] 7-Days Kyushu Holidays

Hakata, Nagasaki, Kumamoto, Kagoshima, Miyazaki, Beppu & Fukuoka Tour (Round Trip from Fukuoka)

Day 1		Meal B : x L : x D : H
08:30	Fukuoka Airport Arrival	
10:20-10:40	Transfer To Yutoku Inari Shrine	
13:00-14:00	Transfer To Glover Garden	
14:10-15:10	Transfer To Oura Church	
15:30-16:30	Transfer To Nagasaki Peace park	
16:50	Hotel Check-In : Garden Terrace Nagasaki Hotel	



### Day 1: Garden Terrace Nagasaki Hotel & Resort (Onsen & Dinner)

**Web Site:** [www.gt-nagasaki.jp](http://www.gt-nagasaki.jp) **Room:** Twin 50 Sqm.

Only 1 hour from Nagasaki Airport Station and 10 minutes from Nagasaki Station by car. Our hotel is located on Mount Inasa, symbol of the city of Nagasaki. All rooms are non-smoking and include a private terrace. Gaze upon the world-renowned nightscape of the vibrant, historic city from our spacious guestrooms, all of which are over 46 square meters.

### Day 2: Kumamoto Hotel Castle

**Web Site:** [www.hotel-castle.co.jp](http://www.hotel-castle.co.jp) **Room:** Deluxe Twin 43 Sqm.

Located in the middle of Kumamoto City, Kumamoto Hotel Castle is just a 3-minute walk from Torichosuji Station. This hotel is ideal for business and visiting Kumamoto Castle, and features meeting rooms, a banquet hall, restaurants, and a hair salon.



### Day 2

Day 2		Meal B : H L : x D : x
08:20	Hotel Check-Out	
12:40-13:30	Transfer To Roadside Station Kamiyamakusa Sunpearl	
14:00-14:10	Transfer To Roadside Station Uto Marina	
15:10-16:00	Transfer To Kumamoto Castle	
16:10-16:50	Transfer To Suizenji Garden	
17:00	Hotel Check-In: Kumamoto Hotel Castle	

Day 3		Meal B : H L : x D : H
08:00	Hotel Check-Out	
10:00-10:30	Transfer To Kokubu Shiroyama Park	
11:30-12:20	Transfer To Senganen Garden	
14:30-15:30	Transfer To Chiran Peace Museum for Kamikaze Pilots	
16:40-17:20	Transfer To National Park Resort Kyukamura Ibusuki	
17:50	Hotel Check-In : Hotel Syusuien	



### Day 3: Hotel Syusuien (Onsen & Dinner)

**Web Site:** [www.syusuien.co.jp](http://www.syusuien.co.jp)

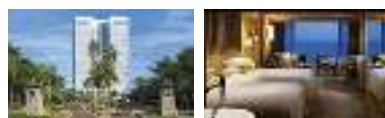
**Room:** 12.5 Plus + 8 Plus + Sitting Room (15 Plots) with Bath and Toilet

Ibusuki Onsen Hotel Syusuien is located in the heart of Ibusuki and about 10 minutes free shuttle service from JR Ibusuki station. This hotel is located near Ibusuki Onsen. Free WiFi is available throughout the hotel. Yukata are available in your room.

### Day 4: Hotel Sheraton Grande Ocean Resort

**Web Site:** [www.sheratongrandeocceanoresort.com/jp?SWAQ=958C](http://www.sheratongrandeocceanoresort.com/jp?SWAQ=958C) **Room:** Suite 109 Sqm.

Located just 15 minutes from Miyazaki International Airport, Sheraton Grande Ocean Resort offers a wide range of activities for guests to enjoy. Featuring a golf course and tennis courts, guests can also choose to relax in the resort's soothing hot spring featuring an open air bath, or enjoy a massage in the spa.



### Day 4

Day 4		Meal B : H L : x D : x
08:20	Hotel Check-Out	
15:20-16:20	Transfer To Udo Jingu Shrine	
	Transfer To Nichinan Kaigan Quasi National Park	
17:40	Hotel Check-In : Hotel Sheraton Grande Ocean Resort	

Day 5		Meal B : H L : x D : H
08:00	Hotel Check-Out	
10:50-12:20	Transfer To Takachiho Gorge	
15:40-16:40	Transfer To Yasuragi Yunotsubo Yokocho	
16:40-17:10	Transfer To Kinrin Lake	
18:00	Hotel Check-In : Hotel Seikai	



### Day 5: Hotel Seikai (Onsen & Dinner)

**Web Site:** [www.seikai.co.jp](http://www.seikai.co.jp) **Room:** Japanese Style 77 Sqm.

Offering dynamic sea views from the comfort of an open-air bath on the beach as well as luxurious guest rooms. All rooms are ocean view, with open-air bath and strong individuality styles, with three places to eat. Our "hot spring resort traditional hotel" will put a smile on your face.

Day 6		Meal B : H L : x D : x
08:20	Hotel Check-Out	
08:40-10:10	Transfer To Beppu Jigoku Meguri	
11:10-12:50	Transfer To Hirose Museum	
13:50-14:30	Transfer To Dazaifu Tenmangu Shrine	
15:00-17:30	Transfer To Tenjin Shopping	
17:40	Hotel Check-In : Hotel Okura Fukuoka	



### Day 6: Hotel Okura Fukuoka

**Web Site:** [www.fuk.hotelokura.co.jp](http://www.fuk.hotelokura.co.jp) **Room:** Deluxe Twin 50 Sqm.

Known as the "Gateway of Asia" in Japan. Hotel Okura Fukuoka was founded in this international city with a dream. Like the clouds flying across the ocean, we wish to provide a lively place where people can gather and interact from around the world. Hotel Okura's corporate philosophy has traditionally been to offer the best facilities, cuisine and service.

Day 7		Meal B : H L : x D : x
Morning	Hotel Check-Out Individually (No Vehicle Transfer)	

### Websites of Visiting Places

1. Takachiho Gorge: [www.japan.travel/en/spot/615](http://www.japan.travel/en/spot/615)
2. Yasuragi Yunotsubo Yokocho: [www.yufuin.org](http://www.yufuin.org)
3. Kinrin Lake: [www.city.yufu.oita.jp/kankou/kankou/kinrinko](http://www.city.yufu.oita.jp/kankou/kankou/kinrinko)
4. Beppu Jigoku Meguri: [www.beppu-jigoku.com](http://www.beppu-jigoku.com)
5. Hirose Museum: <http://hirose-museum.jp/>
6. Dazaifu Tenmangu Shrine: [www.dazaifutenmangu.or.jp](http://www.dazaifutenmangu.or.jp)
7. Tenjin Shopping: [blog.gaijinpot.com/shopping-fukuoka](http://blog.gaijinpot.com/shopping-fukuoka)

### Tour Price in Japanese Yen (This rate is based on 2 adults sharing in 1 room.)

PAX	2	3	4	5	6	7	8
Adult	832,000	644,000	550,000	494,000	456,000	429,000	409,000

## Information on Visiting Places

### Yutoku Inari Shrine: [www.yutokusan.jp](http://www.yutokusan.jp)

In 1687, the Yutoku Inari Shrine was built upon the request of Kazanin Manko-hime, the wife of Lord Nabeshima Naotomo who ruled the domain of Hizen Kashima. At the shrine, the division of the deity Inari Okami, worshiped by the Emperor, is enshrined. The cult of this deity, the guardian of food, clothing, and shelter among Japanese people.



### Glover Garden: [www.glover-garden.jp](http://www.glover-garden.jp)

An open air museum in Nagasaki that exhibits mansions of several of the city's former foreign residents and related buildings. It is located on the hill where Western merchants settled down after the end of Japan's era of seclusion in the second half of the 19th century. The main attraction of the garden is the Former Glover House.



### Oura Church: [www1.bbq.jp/ourahp](http://www1.bbq.jp/ourahp)

Oura Cathedral is the oldest wooden church of gothic architecture existing in Japan. It was built in 1864 by a French missionary, and was thus known by the people of Nagasaki at the time as the "French Temple".



### Nagasaki Peace Park: [htwww.city.nagasaki.lg.jp/hei-wa/3030000/3030100/p005151.html](http://htwww.city.nagasaki.lg.jp/hei-wa/3030000/3030100/p005151.html)

The Nagasaki Peace Park is a tranquil space that commemorates the atomic bombing of Nagasaki on August 9, 1945, which destroyed a significant portion of the city and killed ten thousands of inhabitants. The complex is comprised of two parks and a memorial museum. In the center of the complex is the Hypocenter Park.



### Roadside Station Kamiamakusa Sunpearl: [www.sunpearl.jp](http://www.sunpearl.jp)

It is a mail order website that you can order special products and souvenirs from Amakusa. Shrimp, Amakusa the Great, Amakusa Tanboku, Pearl Citut and other seasonal items are stocked. We are preparing many special products of Uenamakusa city as a thank you home town tax payment.



### Roadside Station Uto Marina: <http://okoshikikan.net>

Okokikikan is located near the center of Kumamoto prefecture, and it is along Kyushu's leading sightseeing route National Route No. 57. It is in a scenic place where you can see the Unzen Futenakake volcano adjacent to Japan Nagisa Hakko 'Okiki Kohki (Oshiki) Coast'.



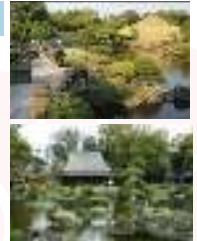
### Kumamoto Castle: [www.manyou-kumamoto.jp](http://www.manyou-kumamoto.jp)

With large castle grounds and a variety of buildings, Kumamoto Castle offers its visitors one of the most complete castle experiences in Japan. Only a few structures have survived the centuries since the castle's construction in 1607 intact.



### Suizenji Garden: [www.suizenji.or.jp](http://www.suizenji.or.jp)

A spacious, Japanese style landscape garden in Kumamoto, best enjoyed by strolling along a circular path. It was built by the Hosokawa family in the 17th century. The garden reproduces the 53 post stations of the Tokaido, the important road, which connected Edo with Kyoto during the Edo Period, in miniature form, including a small Mt. Fuji.



### Kokubu Shiroyama Park: [www.nihonkankou.or.jp.e.wp.hp.transer.com](http://www.nihonkankou.or.jp.e.wp.hp.transer.com)

Mt. Kirishima is visible on the north. A stately Sakurajima and the Kinko Bay—where waves are calm—are seen on the south. In addition, the Park is located on a highland which is 192 meters above the sea level overlooking the Kokubu Plain. There are many facilities such as Children Square.



### Senganen Garden: [www.senganen.jp](http://www.senganen.jp)

Sengan-en and the surrounding area were fundamentally important in the modernization of Japan. It was here that Western industrial technology was introduced to Japan, studied and used in the creation of modern factories.



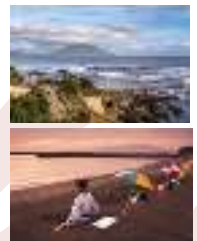
### Chiran Peace Museum for Kamikaze Pilots: [www.chiran-tokkou.jp](http://www.chiran-tokkou.jp)

Chiran Peace Museum exhibits many articles and portfolios left by the deceased soldiers who fought for Japan during the final moments of World War II. The last battle took place in Okinawa. The bloodshed was unprecedented in the Japanese war effort up to that point. The soldiers represented in the Museum died as Army TOKKŌ pilots of special attack.



### National Park Resort Kyukamura Ibusuki: [www.qkamura.or.jp/en/ibusuki](http://www.qkamura.or.jp/en/ibusuki)

Ibusuki, Kagoshima, is situated at the southernmost tip of Sastuma Peninsula and is one of the greatest hot spring resorts on Kyushu Island. One specialty of Kyukamura Ibusuki is the large sand bath, which is especially worth trying. Hibiscus and Bougainvillea flowers will put you right in the mood of a tropical island.



### Udo Jingu Shrine: [www.udojingu.com](http://www.udojingu.com)

Located on the Nichinan Coast south of Miyazaki City, is dedicated to Yamasachihiko, the father of Emperor Jimmu, the mythical first emperor of Japan. This brightly painted shrine is set in a cave on the side of a cliff overlooking the ocean and so enjoys a spectacular view.



### Nichinan Kaigan Quasi National Park: [https://en.wikipedia.org/wiki/Nichinan\\_Kaigan\\_Quasi-National\\_Park](https://en.wikipedia.org/wiki/Nichinan_Kaigan_Quasi-National_Park)

Nichinan Kaigan Quasi-National Park is a Quasi-National Park on the coast of Kagoshima Prefecture and Miyazaki Prefecture, Japan. It was founded on 1 June 1955 and has an area of 45.42 km<sup>2</sup>.



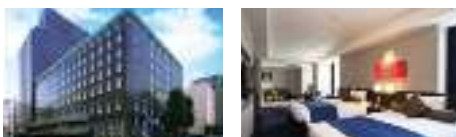
## [Course Number : 1197] 7-Days Hokkaido & Tohoku Holidays

Sapporo, Toya, Onuma Park, Hakodate, Aomori, Matsushima & Sendai Tour (Round Trip from Chitose to Sendai)

### Day 1: Sapporo Grand Hotel

**Web Site:** [www.grand1934.com/en](http://www.grand1934.com/en)

**Room:** Well-Being Deluxe Twin Room 54 Sqm.



Sapporo Grand Hotel is very conveniently located in the center of Sapporo. Since opening its doors as Hokkaido's first genuine Western style hotel in December 1934, the Sapporo Grand Hotel has remained committed to greeting its guests with its "Hospitality First" policy. For business or pleasure, the Sapporo Grand Hotel offers a wide range of accommodations.

Day 1		Meal B : x L : x D : x
09:00	Chitose Airport Arrival	
10:00-10:40	Transfer To Hitsujigaoka Observation Hill	
11:00-11:30	Transfer To Odori Park & AkarengaSapporo	
13:50-15:50	Transfer To Otaru Canal & Venetian Art Museum	
16:30	Hotel Check-In : Sapporo Grand Hotel	

### Day 2: The Windsor Hotel Toya Resort & Spa (Onsen & Dinner)

**Web Site:** [www.windsor-hotels.co.jp/ja](http://www.windsor-hotels.co.jp/ja)

**Room:** Non Smoking Lake Side Junior Suite 58 Sqm

There are times when you want something a little more decadent than the ascetic charms of the ryokan. The Japanese countryside is home to some astonishing luxury hotels as well, the Windsor Hotel Toya among them. This Hokkaido hotel, with its mountaintop view of Lake Toya.



Day 2		Meal B : H L : x D : H
08:30	Hotel Check-Out	
08:50-09:50	Transfer To Mount Okura	
11:40-12:20	Transfer To Noboribetsu Jigokudani	
12:30-15:30	Transfer To Date Jidaimura Noboribetsu	
16:20-17:20	Transfer To Showa Shinzan Bear Park	
17:40	Hotel Check-In: The Windsor Hotel Toya Resort & Spa	

### Day 3

Meal B : H L : x D : H

08:00	Hotel Check-Out
10:00-12:30	Transfer To Onuma Quasi National Park
13:10-14:50	Transfer To Goryokaku Tower & Goryokaku Park
15:10-17:10	Transfer To Kanemori Red Brick Warehouse
17:30-19:00	Hotel Check-In : Kappo Ryokan Wakamatsu
19:30-20:40	Transfer To Mount Hakodate & Hakodate Ropeway
21:00	Return To Hotel



### Day 3: Kappo Ryokan Wakamatsu (Onsen & Dinner)

**Web Site:** [www.wakamatsuryokan.com](http://www.wakamatsuryokan.com)

**Room:** Non Smoking Japanese Room 12.5 Tatami (About 20 Sqm.)

After almost a century of Japanese tradition, Wakamatsu Hot Spring Ryokan was founded in 1922 in Yunokawa, Hakodate. Wakamatsu has been the Showa Emperor's designated Ryokan in Hakodate. More recently, it has also been recognized with honor in the Michelin Guide to Hokkaido.

### Day 4: Hoshino Resorts Oirase Keiryu Hotel (Onsen & Dinner)

**Web Site:** <https://www.oirase-keiryu.jp/en>

**Room:** Nagomi Japanese Style 44 Sqm.

Hoshino Resorts Oirase Keiryu Hotel stands alone near the Oirase Keiryu mountain stream, one of the most picturesque locations in Japan. The Oirase Keiryu stream shines its brightest early in the morning. The chirping of birds echo through the silent calm, and the sunlight filters past the trees to sparkle on the water's surface, creating a truly graceful stream.



### Day 4

Meal B : H L : x D : H

08:20	Hotel Check-Out
10:50-11:50	Transfer To Nebuta House Warasse
12:00-13:00	Transfer To Furukawa Fish Market
13:40-14:20	Transfer To Kayano Plateau
14:30-15:30	Transfer To Hakkoda Ropeway
16:20	Hotel Check-In : Hoshino Resorts Oirase Keiryu Hotel

### Day 5

Meal B : H L : x D : H

08:00	Hotel Check-Out
08:20-08:50	Transfer To Oirase Stream
09:00-10:00	Transfer To Lake Towada
12:40-14:10	Transfer To Koiwai Farm
14:30-15:30	Transfer To Morioka Handmade Village
16:30	Hotel Check-In : Yusen Shidate Hotel



### Day 5: Yusen Shidate Hotel (Onsen & Dinner)

**Web Site:** <https://shidate.jp>

**Room:** Japanese Style Room with Outdoor Bath 35 Sqm.

Our resort makes the most of its natural surroundings, and of the area's traditional Japanese culture. Set next to a river, our Ryokan offers natural hot-springs with views of a beautiful Teien-style Japanese garden. The meals we serve incorporate a variety of seasonal ingredients. We're sure you will enjoy your experience and fall in love with the atmosphere.

### Day 6: The Westin Sendai

**Web Site:** [www.westin-sendai.com](http://www.westin-sendai.com) **Room:** Club Floor 42 Sqm.

Situated on the 28th to 36th floors, our 292 tastefully appointed guest rooms and suites immerse you in modern comfort and expansive views. In addition to high-speed wireless connectivity, each spacious room is furnished with our Heavenly Bed® for deep, restorative sleep.



### Day 6

Meal B : H L : x D : x

08:00	Hotel Check-Out
09:00-10:30	Transfer To Chusonji Temple
12:00-14:10	Transfer To Godaido Shrine & Zuiganji Temple
14:40-16:10	Transfer To Mitsui Outlet Park Sendai Port
16:40-17:30	Transfer To Aoba Castle
17:40	Hotel Check-In : The Westin Sendai

#### Websites of Visiting Places

1. Koiwai Farm: [www.koiwai.co.jp/](http://www.koiwai.co.jp/)
2. Morioka Handmade Village: <https://travel.navitime.com/en/area/jp/guide/NTJtrv0462-en/>
3. Chusonji Temple: [www.chusonji.or.jp/](http://www.chusonji.or.jp/)
4. Godaido Shrine: [www.japan-guide.com/e/e5103.html](http://www.japan-guide.com/e/e5103.html)
5. Zuiganji Temple: [www.zuiganji.or.jp/](http://www.zuiganji.or.jp/)
6. Aoba Castle: [www.honmarukaikan.com/](http://www.honmarukaikan.com/)

#### Tour Price in Japanese Yen

(This rate is based on 2 adults sharing in 1 room.)

PAX	2	3	4	5	6	7	8
Adult	890,000	696,000	599,000	540,000	501,000	473,000	453,000

### Day 7

Meal B : H L : x D : x

Morning	Hotel Check-Out Individually (No Vehicle Transfer)
---------	--

## Information on Visiting Places

### Hitsujioka Observation Hill: [www.hitsujioka.jp](http://www.hitsujioka.jp)

Peaceful scenery with a comfortable breeze. Hitsujioka Observation Hill is a popular tourist spot for both domestic tourists and international tourists. From the hill you can look down on the entire Sapporo city, Ishikari plain and the silver roof of the Sapporo dome. You can see visitors taking pictures with a unique pose in front of Dr. Clark.



### Odori Park: [www.sapporo-park.or.jp/odori](http://www.sapporo-park.or.jp/odori)

Odori Park is an oasis in the city center and extends 1.5 km from east to west. The history of Odori Park began in 1871 when it was constructed as a large-scale firebreak to separate the downtown area to the administrative district in the north and the residential and commercial district in the south.



### Akarenga Sapporo: [www.pref.hokkaido.lg.jp](http://www.pref.hokkaido.lg.jp)

The Former Hokkaido Government Office Building is the outstanding red building located in central Sapporo. Around 2,500,000 bricks made in Hokkaido were used in its construction. Inside the building are rooms decorated in the glamorous Neo-Baroque style.



### Kitaichi Venetian Art Museum: [www.venezia-museum.or.jp](http://www.venezia-museum.or.jp)

A museum that introduces you rich and pleasant Venetian culture. You can see elegant life style of aristocracies every seasons and a lot of works of Venetian glass. There is always popular place in here. That is where you can wear real Italian dress and take photos.



### Noboribetsu Jigokudani: <http://noboribetsu-spa.jp/?see=jigokudani2>

It is a mail order website that you can order special products and souvenirs from Amakusa. Shrimp, Amakusa the Great, Amakusa Tanboku, Pearl Citrus and other seasonal items are stocked. We are preparing many special products of Uenamakusa city as a thank you home town tax payment.



### Date Jidaimura Noboribetsu: <http://edo-trip.jp/>

A history theme park highlighting the Edo Period, one of the most attractive eras in Japanese history. Step back in time to enjoy traditional games, activities, theaters, street performances and more. The charm of ancient Japan is abundant as you mingle with the Ninja and Oiran.



### Showa Shinzan Bear Park: <http://kumakuma.co.jp>

In Showa Shinzan bear ranch known as breeding brown bear, brown bears nearly 100 spot popularity turning up with full of amiability. Particularly, figure that newborn bear's cub plays around in spring appears for voice unintentionally.



### Onuma Quasi National Park: [www.onuma-guide.com](http://www.onuma-guide.com)

Onuma Park is located about a 40-minute drive from one of Hokkaido's most prominent tourist spots, Hakodate. The easily-accessible Onuma Park can also be reached by train within 50 minutes. Including beautiful flowers and birds during the spring, lush greenery in summer, crimson foliage in autumn, and graceful snow scape in winter.



### Goryokaku Park: [www.goryokaku-tower.co.jp](http://www.goryokaku-tower.co.jp)

The Site of Goryokaku Fort, designated as a national special historic site, is a park blessed with nature. You can enjoy walking around through beautiful scenery in four seasons: Cherry blossoms in spring, green trees in summer, autumn leaves in fall and snow in winter. The observation floors of adjacent Goryokaku Tower command a sweeping view of the huge star-shaped fort.



### Kanemori Red Brick Warehouse: <https://hakodate-kanemori.com/a30th>

The Kanemori Red Brick Warehouse is a commercial complex consisting of four facilities, which were built after renovating an old red brick warehouse built in 1909. We hope you take the time to enjoy shopping and dining.



### Hakodate Ropeway: <https://334.co.jp/eng/>

A 334 meter high, wooded mountain at the southern end of the peninsula on which much of central Hakodate is located. On clear days and nights, in particular, the views from the mountain are spectacular and included among Japan's three best night views alongside the views. Facilities at the summit, which is accessible by ropeway, bus or car.



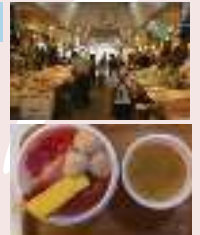
### Nebuta House Warasse: [www.nebuta.jp/warasse](http://www.nebuta.jp/warasse)

The Nebuta Warasse museum attempts to capture the spirit of the festival and gives visitors a taste of its lively atmosphere, history and traditions. Upon entering the second floor entrance to the exhibitions, visitors are presented with the sights of the festival along a red corridor lined with photos and images from the Nebuta Matsuri's 300 year history.



### Furukawa Fish Market: [www.udojingu.com](http://www.udojingu.com)

The original Aomori Nokkedon is a donburi rice bowl dish of toppings on hot steamed rice; choose as much and as many of the toppings you like from the range of fresh seafood that only Aomori can provide, prepared deli food and local specialty food and dishes sold at the shops in the market. Enjoy the original Aomori Nokkedon, Aomori taste!



### Hakkoda Ropeway: [www.hakkoda-ropeway.jp](http://www.hakkoda-ropeway.jp)

You can enjoy mountain skiing from the end of November through to the middle of May. As the snow melts, the mountains are filled with great many alpine plants in bloom. Walking the nature trail from the Summit Park Station, you can easily enjoy watching marshes and alpine vegetation



## [Course Number : 1198] 8-Days Sanin&Sanyo Holidays

Jinosaki-Onsen, Tottori, Matsue, Tsuwano, Hagi, Miyajima, Hiroshima, Kurashiki, Okayama, Osaka(Round Trip from Kinsai)

Day 1		Meal B : x L : x D : H
08:30	Meet at Kinsai Airport	
11:25 – 13:05	Transfer To Amanohashidate	
13:45 – 15:15	Transfer To Funaya Village	
17:25	Check in : Nishimuraya Hotel Shogetsutei	

Day 2		Meal B : H L : x D : H
08:20	Hotel Check out	
10:50 – 11:40	Transfer To Tottori Sand Dunes	
11:50 – 13:20	Transfer To Tottori Poar Market Karoichi(Lunch)	
15:20 – 16:00	Transfer To Matsue Castle	
16:10 – 17:00	Transfer To Koizumi Yakumo Old House	
17:10 – 17:30	Transfer To Shinji Lake	
17:40	Check in : Hoshino Resort Kai Kawaji Onsen	

Day 3		Meal B : H L : x D : H
08:00	Hotel Check out	
09:00 – 10:00	Transfer To Izumo Taisha Shrine	
12:10 – 13:10	Lunch at Shimane Fish Center	
15:10 – 16:10	Transfer To Tonomachi Street	
17:50	Check in : Hagi Ichirin	

Day 4		Meal B : H L : x D : H
09:00	Hotel Check out	
09:20 – 10:00	Transfer To Matsuno Shrine	
10:00 – 11:00	Transfer To HagiYaki-kaikan	
11:00 – 12:00	Transfer To Shoka Sonjuku(Matsushita Village)	
12:10 – 13:10	Lunch	
14:20 – 14:50	Transfer To Akiyoshidai Park And Akiyoshi Cave	
16:50	Check in : Otani Sanso Ryokan & Hotel	

Day 6		Meal B : H L : x D : H
08:00	Hotel Check out	
10:10 – 12:20	Transfer To Kurashiki Ivy Square(Lunch)	
13:10 – 14:10	Transfer To Okayama Korakuen Garden	
15:50 – 17:20	Transfer To Himeji Castle	
17:30	Check in : Yumeno-i-an Yuyake-Koyake	

Day 8		Meal B : H L : x D : x
Morning	Hotel Check-Out Individually (No Vehicle Transfer)	

### Hiroshima

Hiroshima is the capital of Hiroshima Prefecture and the largest city in the Chūgoku region of western Honshu – the largest island of Japan. Hiroshima gained city status on April 1, 1889. On April 1, 1980, Hiroshima became a designated city. As of August 2016, the city has an estimated population of 1,196,274.

Hiroshima is known as the first city in history to be targeted by a nuclear weapon when the United States Army Air Forces (USAAF) dropped an atomic bomb on the city at 8:15 a.m. on August 6, 1945, near the end of World War II.

### Osaka

Osaka is Japan's second largest metropolitan area after Tokyo. It has been the economic powerhouse of the Kansai Region for many centuries. Osaka was formerly known as Naniwa. Before the Nara Period, when the capital used to be moved with the reign of each new emperor, Naniwa was once Japan's capital city, the first one ever known.



Day 5		Meal B : H L : x D : x
08:20	Hotel Check out	
10:00 – 10:40	Transfer To Kintai Baridge	
11:20 – 11:50	Miyajimaguchi Port By Boat to Miyajima Port have Lunch(Exluded Lunch)	
14:40 – 15:10	Miyajima Port By Ferry to Miyajimaguchi Port	
16:00 – 17:00	Transfer To Hiroshima Peace Memorial Museum	
17:10	Check in : Sheraton Grande Hotel Hiroshima	

Day 7		Meal B : H L : x D : x
08:30	Hotel Check out	
09:20 – 10:20	Transfer To Kobe Port Tower	
10:30 – 12:10	Transfer To Kitano Ijinkan	
12:10 – 13:20	Lunch	
14:10 – 15:10	Transfer To Rokko Arima Ropeway(One Way)	
16:20 – 17:30	Transfer To Osaka Castle	
17:40	Hotelin : Swissotel Nankai Osaka	

**Tour Price in Japanese Yen (This rate is based on 2 adults sharing in 1 room.)**

PAX	2	3	4	5	6	7	8
<b>Adult</b>	<b>912,000</b>	<b>698,000</b>	<b>590,000</b>	<b>526,000</b>	<b>483,000</b>	<b>453,000</b>	<b>430,000</b>

## Hotel List



### Nishimuraya Hotel Shogetsutei

Forests surround our 165,000 square meters of lavish gardens. The garden field provides a charming elegance to a leisurely visit to the hot springs. Our ambition is to provide satisfaction to our guests' desires to travel with our warm hospitality. Nishimuraya Hotel Shogetsutei, as you know it now, emerged from the melding of 150 years of history with a more modernized Japanese style of hotel.



### Hagi Ichirin

This is the closest hotel to Kikugahama Beach, which is a famous sunset-viewing spot. The hotel offers a private open-air bath and open-air bath with views of the Sea of Japan. There is also an observatory and foot bath overlooking the Hagi six islands and Mt. Shizuki.

Favored by women, loved by all, this hotel received the Jalan of the Year award for the most popular hotel 4 years running, from 2012 to 2015. The hotel offers many women-friendly services, including "petite cake buffet", "women's room", "foot bath" and "stone sauna".



### Sheraton Grange Hotel Hiroshima

The Sheraton Grand Macao Hotel, Cotai Central is a casino resort hotel located in Cotai, Macau, China. The hotel was constructed by Las Vegas Sands and is managed by Starwood Hotels & Resorts Worldwide. It is part of Macau's newest fully integrated resort complex, Sands Cotai Central. The 3,896-room hotel opened on September 20, 2012 and is both the largest hotel in Macau and in the Starwood chain.

### Day 1

### Day 2



### Hoshino Resort Kai Kawaji Onsen

At this quiet getaway nestled along a scenic wooded ravine, relax in lush hot-spring baths and enjoy sweets made with freshly ground flour and grain at our traditional water mill.

Hoshino Resort is a Japan-based international operator of ryokan (Japanese inns) with its head office in Karuizawa, Nagano. Founded in 1904 by Kuniji Hoshino as a forestry business in Karuizawa, in the Japanese Alps, it opened its first hot spring resort in 1914.

### Day 3

### Day 4



### Otani Sanso Ryokan & Hotel

Nestled in the green mountains of Nagato in Yamaguchi prefecture alongside the Otozure River, Otani Sanso is a spacious traditional Japanese inn (ryokan) selected as one of the best in the country, especially renowned for a high level of hospitality.



### Yumeno-an Yuyake-Koyake

Yumenoan Yuyake Koyake infrastructure and services Guests can use such amenities: spa and wellness center, luggage storage, shuttle bus service(free), parking space. Supported types of payment cards: American Express, Visa, Mastercard, Diners Club, JCB.

### Day 5

### Day 6

### Day 7



### Swissotel Nankai Osaka

Osaka is a deluxe hotel ideally located in the heart of Namba, Osaka's most exciting entertainment, shopping and dining district. The hotel sits above Nankai Railway's Namba Station offering direct train access to Kansai International Airport and all major tourist attractions such as Kyoto, Nara and Kobe are within easy reach.



## [Course Number : 1200] 8-Days Dragon Route + Kanazawa, Kurobe ,Nagano & Tokyo

Nagoya, Takayama, Shirakawago, Kanazawa, Kurobe, Matsumoto, Kamikochi, Kawaguchiko & Tokyo Tour (Round Trip from Chubu)

### Day 1: Hotel Nikko Kanazawa

**Web Site:** www.hnkanazawa.jp

**Room:** Twin Room 32 Sqm.

A relaxing moment in Kanazawa City where tradition and culture come alive. The affordable luxury accommodations of Hotel Nikko Kanazawa combine an elegant European atmosphere with the beauty of the four seasons. Business and leisure travelers will appreciate that the hotel is conveniently located in front of JR Kanazawa Station.



#### Day 1

Meal B : x L : x D : x

09:00	Nagoya Airport Arrival
11:00-11:30	Transfer To Gujo Hachiman Castle
12:30-14:30	Transfer To Takayama Old Town
15:10-16:10	Transfer To Shirakawa Village
17:20	Hotel Check-In : Hotel Nikko Kanazawa

### Day 2: Hotel Kagaya (Onsen & Dinner)

**Web Site:** www.kagaya.co.jp

**Room:** Setsukido Special Selection Japanese Style Room

Boasting a long history of hospitality and gorgeous hot spring baths, Kagaya is a renowned ryokan accommodation offering authentic Japanese experience. It provides free shuttle services to/from the nearest JR Wakura Onsen Station, a 7-minute drive away. Free WiFi is available in public area.



#### Day 2

Meal B : H L : x D : H

08:30	Hotel Check-Out
08:45-09:45	Transfer To Kenrokuen Garden
09:50-10:30	Transfer To Nomura Samurai House
10:30-11:10	Transfer To Myoryuji Temple
12:10-13:40	Transfer To Chirihama Nagisa Beach Driveway
14:25-15:25	Transfer To Gammon Cliff Park
16:15	Hotel Check-In: Hotel Kagaya

### Day 3: Hotel Keisui (Onsen & Dinner)

**Web Site:** www.keisui.jp **Room:** Japanese Style Open Air Bath 20-25 Sqm.

Hotel Keisui is located in Oomachi, a province of Nagano, and is about 3 hours from Tokyo by train. Hotel Keisui is near the Nagano-side entrance to the Tateyama Kurobe Alpen Route. We utilize the natural hot water of Shinshu Oomachi in a variety of "onsen" (hot spring) facilities.



#### Day 3

Meal B : H L : x D : H

08:00	Hotel Check-Out
10:45-16:55	Transfer To Tateyama Kurobe Alpine Route
17:20	Hotel Check-In : Hotel Keisui

### Day 4: Hotel Tateshina Kaoru Kaze (Onsen & Dinner)

**Web Site:** www.kaorukaze.net

**Room:** SJapanese Style Open Air Bath 20-25 Sqm.

Boasting a long history of hospitality and gorgeous hot spring baths, Kagaya is a renowned ryokan accommodation offering authentic Japanese experience. It provides free shuttle services to/from the nearest JR Wakura Onsen Station, a 7-minute drive away. Free WiFi is available in public area.



### Day 4: Hotel Tateshina Kaoru Kaze (Onsen & Dinner)

**Web Site:** www.kaorukaze.net

**Room:** SJapanese Style Open Air Bath 20-25 Sqm.

Boasting a long history of hospitality and gorgeous hot spring baths, Kagaya is a renowned ryokan accommodation offering authentic Japanese experience. It provides free shuttle services to/from the nearest JR Wakura Onsen Station, a 7-minute drive away. Free WiFi is available in public area.

### Day 5: Hotel Hakone Kowakien Tenyu (Onsen & Dinner)

**Web Site:** www.ten-yu.com

**Room:** Japanese Style Outdoor Bath 35 Sqm.

Welcome to Hakone Kowakien Ten-yu, a true sanctuary facing magnificent mountain in Hakone, away from your bustling city life. The concept of our ryokan is the harmony of authentic Japanese hospitality and the nature. You can watch the sunrising sky while bathing in our enormous open-air onsen with infinite horizon view.



#### Day 5

Meal B : H L : x D : H

08:00	Hotel Check-Out
10:10-11:10	Transfer To Shosenkyo Bridge
12:40-13:40	Transfer To Lake Kawaguchiko
14:30-16:10	Transfer To Gotemba Premium Outlets
17:20	Hotel Check-In : Hotel Hakone Kowakien Tenyu

### Day 6: Meal B : H L : x D : x

08:00	Hotel Check-Out
08:45-09:35	Transfer To Owakudani
09:50-10:50	Transfer To Hakone Cruise
11:15-12:25	Transfer To Hakone Checkpoint Museum
14:20-17:20	Transfer To Shinjuku Shopping
17:35	Hotel Check-In : Hotel New Otani Tokyo

### Day 7: Meal B : H L : x D : x

09:00	Hotel Departure
09:10-10:20	Transfer To Kokyogien National Garden
10:40-13:10	Transfer To Asakusa Temple
13:15-15:15	Transfer To Tokyo Sky Tree (Outside)
15:30-17:10	Transfer To Akihabara Shopping
17:30	Hotel Arrival



### Day 6&7: Hotel New Otani Tokyo

**Web Site:** www.newotani.co.jp/tokyo **Room:** Executive Deluxe 50 Sqm.

Central Tokyo's enormous New Otani is almost a city in itself, packed with every conceivable facility. You could move in for the rest of your life and want for nothing. It's not without personality, either, largely owing to its fabulous historic private gardens and gracious staff.

#### Day 7

Meal B : H L : x D : x

Morning	Hotel Check-Out Individually (No Vehicle Transfer)
---------	--

#### Websites of Visiting Places

- Hakone Checkpoint Museum: [www.hakonesekisyo.jp/](http://www.hakonesekisyo.jp/)
- Kokyo Gien National Garden: <http://tng.or.jp/koukyo/>
- Asakusa Temple: [www.senso-ji.jp/](http://www.senso-ji.jp/)
- Tokyo Sky Tree: [www.tokyo-skytree.jp/](http://www.tokyo-skytree.jp/)

#### Tour Price in Japanese Yen

(This rate is based on 2 adults sharing in 1 room.)

PAX	2	3	4	5	6	7	8
Adult	787,000	611,000	522,000	469,000	434,000	409,000	390,000

## Information on Visiting Places

### Gujo Hachiman Castle: <http://castle.gujohachiman.com>

The castle has fantastic views of the surrounding countryside from Gujo Hachiman Castle, the interior of which is now a museum with displays of samurai armor, swords and ornate byobu (folding screens). Of special note is a suit of samurai armor (samurai yoroi) that was passed down in the Aoyama clan and the kin-no-dohyo, a gift to the Aoyama.



### Takayama Old Town: [www.city.takayama.lg.jp](http://www.city.takayama.lg.jp)

Southern half of the old town, especially the Sannomachi Street, survives in a particularly pretty state with many old homes, shops, coffee houses and sake breweries, some of which have been in business for centuries. The shops in the area are typically open daily from 9:00 to 17:00. Several homes in the old town open their doors to the public.



### Shirakawa Village: <http://shShirakawa Village irakawa-go.org/kankou/area01irakawa-go.org/kankou/area01>

Shirakawa-go (Shirakawa Village) is a Japanese mountain settlement in what was once considered a wild and unexplored region. Because of the area's natural environment, with high mountains and heavy snowfall, interaction with neighboring regions was limited.



### Kenrokuen Garden: [www.pref.ishikawa.jp/siro-niwa/kenrokue](http://www.pref.ishikawa.jp/siro-niwa/kenrokue)

By introducing the element of the "strolling-style" garden, Kenroku-en is laid out with a variety of gardening techniques from different periods. Unlike the sit-and-view style garden where you enjoy the landscape only from a certain spot of a temple or a palace, the strolling-style garden has large ponds, hills, cottages and tea houses arranged on a spacious ground.



### Nomura Samurai House: [www.nomurake.com](http://www.nomurake.com)

Nomura Samurai House is an historic home and garden in Nagamachi, a very well preserved district to the west of Kanazawa Castle. Nagamachi was formerly the area where the samurai of Kanazawa lived with their families. Today the area looks pretty much the same as it did in the Edo era, with canals and cobbled streets that run between earthen tile.



### Myoryuji Temple: [www.myoryuji.or.jp](http://www.myoryuji.or.jp)

Myoryuji Temple is often called "the Ninja Temple" because of its many trap doors and secret passageways. Actually, the temple has no connection with the historical ninja who were spies and assassins. Its unique architecture and history makes it a fascinating location to visit



### Tateyama Kurobe Alpine Route: [www.alpen-route.com](http://www.alpen-route.com)

The main attraction of the Tateyama Kurobe Alpine Route is the magnificent scenery of the Tateyama Mountain Range, part of the Chubu Sangaku National Park. Visitors can enjoy varying vistas during different seasons of the year.



### Daio Wasabi Farm: [www.daiowasabi.co.jp](http://www.daiowasabi.co.jp)

The farm has been attractively developed for tourists with walking trails between the fields. Within the farm stands the Daio Shrine, which enshrines the spirit of an ancient local hero, Hachimen Daio, after which the farm has been named and who is considered the farm's protector? Nearby the shrine is also a small cave related to the local hero's legend.



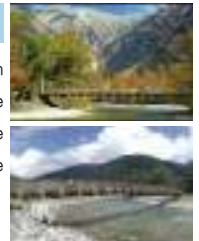
### Matsumoto Castle: [www.matsumoto-castle.jp](http://www.matsumoto-castle.jp)

Starting from Fukashi Castle which was built during the Eisho period of the Warring States period, Matsumoto Castle has become a National Treasure as the oldest extant five structure/six story castle in Japan. Its contrasting black and white, against the Japanese Alps makes for splendid scenery.



### Kamikochi: [www.kamikochi.or.jp](http://www.kamikochi.or.jp)

Japan is full of beautiful contrast and lives in tension with itself. One of the most beautiful tensions hangs between the booming urban life in big cities and the rest of Japan where a large population lives in harmony with nature, enjoying the seasons in rural Japan.



### Lake Kawaguchiko: [www.japan-guide.com/e/e6906.html](http://www.japan-guide.com/e/e6906.html)

One of the nicest spots for cherry blossoms is the seaside promenade near the Kawaguchiko Music Forest, while photographers will enjoy the "Momiji Tunnel" for autumn colors, a maple tree covered road section along the lake's northern shore. Among the wide range of other tourist attractions available around Lake Kawaguchiko are hot spring baths, various museums, the Fuji Q amusement park, boat tours and a ropeway.



### Gotemba Premium Outlets: [www.premiumoutlets.co.jp/gotemba](http://www.premiumoutlets.co.jp/gotemba)

The Gotemba Premium Outlets are Japan's most popular outlet mall, located in Gotemba City at the base of Mount Fuji, not far from Hakone. The mall features over 200 stores along with a number of restaurants, a food court and a 50 meter high ferris wheel.



### Owakudani: [www.town.hakone.kanagawa.jp/index.cfm/8,257,37,156,html](http://www.town.hakone.kanagawa.jp/index.cfm/8,257,37,156,html)

Owakudani is the area around a crater created during the last eruption of Mount Hakone some 3000 years ago. Today, much of the area is an active volcanic zone where sulfurous fumes, hot springs and hot rivers can be experienced. Additionally, Owakudani has good views of Mount Fuji on clear days.



### Hakone Cruise: [www.hakone-kankosen.co.jp](http://www.hakone-kankosen.co.jp)

All of the ships are very large, can be boarded easily and does not sway very much, which makes them comfortable for visitors. The surrounding area can be viewed 360 degrees from the observation deck, and great views can also be seen through the large windows inside.

