



# SUZUKA®

## Magic Cerámica

EDITION 2

# SUZUKA®

## Magic Cerámica

**SUZUKA®** Magic Cerámica is a decorative plaster product adopting ceramic color sands and high-tech resin providing seamless coating of a wide range of textures. Use different tools to create different styles from industrial, Scandinavian to classic European.



*The world isn't flat  
so why should  
your walls be?*

- Beautiful and soft color tones, delicate with a natural aesthetic appearance.
- Pollution and water resistant, with lasting weatherability.
- Presents a brilliant appearance that can be molded into various dimensions.
- Uses high-tech resin which prevents cracking.



## Application Process

Process	Material (Mixing Weight Ratio)	Number of Coats	Interval Time Required Between Process (hrs)	Consumption	Tools of Application
<b>1. Surface Preparation</b>	Surface shall be dry and free from dirt, oil, grease and foreign matters. Surface unevenness, crack, and the like shall be treated with cement filler.				
<b>2. Under Coating</b>	EM primer : Water 100 : 2	1	3	0.15 - 0.20 ltr/m	Spray Gun, Roller or Brush
<b>3. Texture Coating</b>	Magic Coat : Water 100 : 0 - 5	1 - 2	24	1.5 - 2.0 kg/m	Trowel, Wooden Float
<b>4. Top Coating</b>	FSI Clear : Water - : -	2	-	0.15 - 0.25 ltr/m	Spray Gun, Roller or Brush

\* May vary in color due to lighting conditions and printing. Please examine product samples prior ordering.

TEXTURES



MC-006(A) ①



MC-002(B) ①



MC-009(C) ⑤



MC-001(D) ①



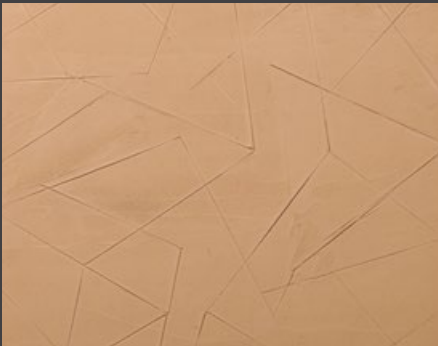
MC-005(E) ① ②



MC-012(F) ① ⑤



MC-011(G) ⑤ ①



MC-007(H) ①



MC-010(I) ① ②



MC-003(J) ①



MC-014(K) ① ②



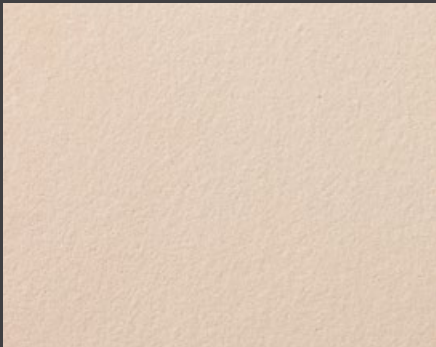
MC-008(L) ①



MC-013(M) ①



MC-015(N) ① ②

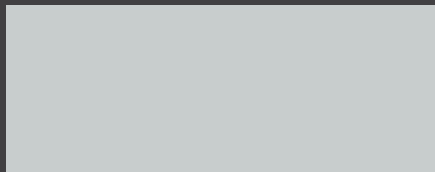


MC-004(O) ⑤

\* May vary in color due to lighting conditions and printing. Please examine product samples prior ordering.



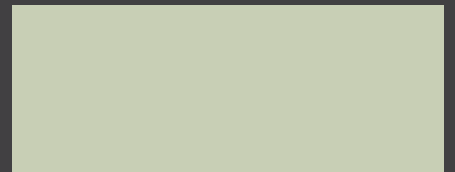
## COLOURS



001



002



003



004



005



006



007



008



009



010



011



012



013



014



015

\* May vary in color due to lighting conditions and printing. Please examine product samples prior ordering.



Join our photo  
contest to win  
RM1,000\*

\*Terms and  
conditions apply

Details at:  
[www.suzuka.com.my/  
promotion/](http://www.suzuka.com.my/promotion/)



*architects choice*

Coating • Architectural Stone & Brick Veneer • Waterproofing



[suzuka.malaysia](http://suzuka.malaysia)

[www.suzuka.com.my](http://www.suzuka.com.my)

HOTLINE

03-3291 0722



I803

TAIWAN • MALAYSIA • THAILAND