

Multicolor in-house label printing begins with the QLS-3000 Xe.

The QLS-3000 Xe offers a triple benefit, integrating three important label functions: instant label output in custom production volumes, variable product identification and tracking information, and graphic marketing communication.

Not limited to printing labels, the QLS-3000 Xe is an extensible package printing solution proven on other materials, including: flexible coated stainless steel, coated foil pouches, Tyvek® pouches, non-woven polysatin care labels, and synthetic hang tags. QuickLabel's applications testing laboratory evaluates printing compatibility upon request.



QLS-3000Xe

Value-Added Color Label Printer

INSTANT LABEL OUTPUT IN CUSTOM PRODUCTION VOLUMES!

Efficient production demands the right labels in the right quantity at the right time, and with the QLS-3000 Xe, that's what you get. QLS-3000 Xe users customize labels on their schedule, enjoying maximum flexibility in label content and production planning. There is no price to pay for last-minute changes because, with the QLS-3000 Xe, labels can be printed moments after they are created on-screen, eliminating fees and delays required by plate-making.



GRAPHIC MARKETING COMMUNICATION!

The QLS-3000 Xe makes private labeling cost-effective, even in small quantities, for manufacturers, producers and processors who wish to enhance sales opportunities by offering finished products to distributors and retailers with labels customized to suit each unique marketing message. Printing in CMY process color or in three spot colors, the QLS-3000 Xe produces durable, colorfast, photorealistic and beautifully illustrated images that sell products and promote brands. Label print runs can be as large or as small as the project requires, from 10 to 10,000 labels.

The QLS-3000 Xe prints your jobs fast, at a blistering rate of 5 inches per second. Because no printing plate is required, there are never minimum purchase quantities to consider. Go ahead. Produce customized labels cost-effectively. With the QLS-3000 Xe, you have the freedom!

VARIABLE PRODUCT TRACKING INFORMATION!

QLS-3000 Xe users have the freedom to edit label content in software, making changes "on-the-fly" to graphics images, logos, text, database-linked fields, barcodes, lot numbers, and expiration dates whenever the need, or the whim, arises. The QLS-3000 Xe handles variable information by allowing users to set content fields to update or change automatically from label to label.

In addition to variable field printing, the QLS-3000 Xe can sequentially print batches of totally different product labels. With a few simple clicks users can go from printing a display label for a jar of salsa to printing a distributor's case label for the same product. Color QuickLabel® 99 Pro software, designed for label creation and print management with the QLS-3000 Xe, makes it easy to preset associated labels to print together automatically.

QUICK LABEL® SYSTEMS

The Labels You Want When You Need Them

www.QuickLabel.com

SPECIFICATIONS

Printing Method: Thermal Transfer, Spot and CMY Process Color

Print Stations: Three printheads

Print Speed: 2"-5" per second (50mm-127mm)

Resolution: 304 dpi

Maximum Print Area: **Width:** 4.4" (112mm) from the inside edge of the label; **Length:** 44" with Windows® Printer Driver; 22" with Custom QuickLabel®

Thermal Transfer Ribbon Supply: 3 rolls, each 984 ft. long (300m); Spot or CMY rolls

Label/Tag Roll Capacity: 10" Outside Diameter Maximum (254mm)

Label/Tag Size: Max. Width: 4.625" (117mm); Min. Width: 1" (25mm) Min. Length: 0.395" (10mm)

Label/Tag Thickness: 12 point maximum recommended (0.16", 0.007mm)

Fonts: 7 TrueType™ fonts resident, others can be downloaded to printer from PC

Resident Barcodes: All standard symbologies, including 2 Dimensional

Control Panel: Ergonomic Key Pad for Menu functions, Backlit LCD display

Connectivity: Platforms: PC, AS/400; Interfaces: High-Speed Parallel (Centronics) & Serial (RS-232), Ethernet Optional

Software: Windows® Driver Included; Custom QuickLabel® Label Creation Suite Optional

Memory: 128 MB RAM standard; 128 MB Flash Card included; up to 512 MB card accepted

Dimensions: 20" H x 17" D x 22" L (508mm x 432mm x 559mm)

Weight: 84 lbs. (38kg) (without label or ribbons)

Power Requirements: 120/240 VAC, 60/50 Hz, 400 Watts, 6.3/4.0A



MANUFACTURER-DIRECT PRINTING SUPPLIES

QuickLabel customers know the value of purchasing from a manufacturer that sells direct. Because we develop printing supplies as well as printers, we take the guesswork out of choosing the right materials to print high-quality labels. We manufacture over 70 different label materials in thousands of die-cut shapes and sizes and a rainbow of printing ribbons, all developed to optimize the print quality of QuickLabel printers. With personal Media Product Specialists to assist you in selecting the right supplies to match your end-use, you'll be printing labels with your QLS-3000 Xe – *fast!*

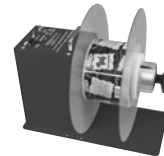
ACCESSORIES



Custom QuickLabel®: Software for label creation and advanced print management.



QuickWrap: Semi-automatic label applicator allows operators to apply labels faster and more accurately.



Label Rewinder: Winds printed labels onto rolls ready for loading onto label applicator.

QUICKLABEL® SYSTEMS

The Labels You Want When You Need Them

World Headquarters

600 East Greenwich Ave., West Warwick,
Rhode Island 02893
toll free: 1.877.757.7978 / 401.828.4000
e-mail: info@QuickLabel.com
www.QuickLabel.com

Factory Sales and Service Centers

Canada: 800-565-2216
France: (+33) 1 34 82 09 00
Germany: +49 (0) 6106-75033
United Kingdom: 1628 668836
USA: 877-757-7978