

## Twice the Impact for Your Message

If you print product labels in a single color, you will find that adding a second color with the QLS-2000 Xe adds more than just another shade; it adds twice the message impact.

### Common QLS-2000 Xe Label Printing Applications:

- Apparel Tags & Care Labels
- Chemical Cleanser Labels
- Food & Beverage Labels
- Manufactured Part Labels
- Medical Device Labels
- Nutraceutical Labels
- Personal Care Product Labels
- Personalized Ad Specialties
- Pharmaceutical & Clinical Trials Labels
- Private Labels for All Industries

Not limited to printing labels, the QLS-2000 Xe is an extensible package printing solution proven in printing directly on other materials, including: metallized PET pouches, flexible coated stainless steel, Tyvek® pouches and lids, Polyart®, non-woven polysatin care labels, and synthetic hang tags. QuickLabel's applications testing laboratory evaluates printing compatibility upon request.



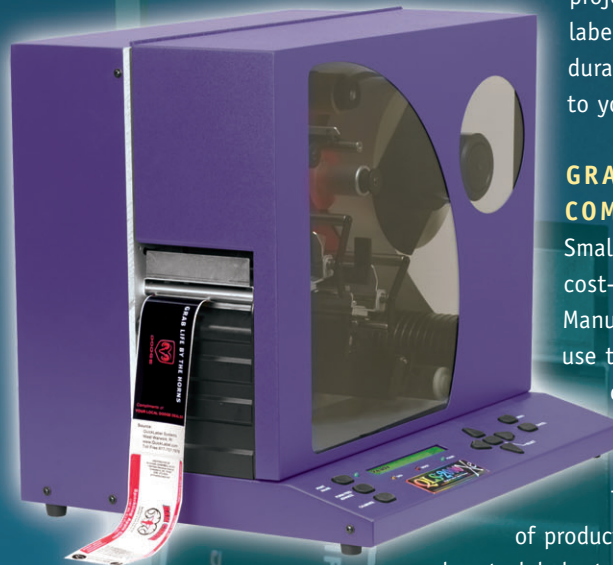
# QLS-2000Xe

## Two-Color Value-Added Label Printer

### INSTANT LABEL OUTPUT IN CUSTOM PRODUCTION VOLUMES

QLS-2000 Xe users get instant access to finished labels, with no delays for plate-making or shipping and no fees to pay for last-minute changes. Labels print at a blistering rate of 5 inches per second in quantities as large or as small as the

project requires, from 10 to 10,000 labels. Finished labels are colorfast, durable, and ready to be applied directly to your product or product packaging.



### GRAPHIC MARKETING COMMUNICATION

Small quantity private label printing is cost-effective with the QLS-2000 Xe. Manufacturers, producers, and processors use the QLS-2000 Xe to enhance sales by custom-labeling products for distributors and retailers.

The QLS-2000 Xe doubles the impact of product information, bringing two blazing colors to labels, tags, and decals in crisp, 300 dpi print resolution. Logos, graphic illustrations, TrueType® fonts, and standard product information such as barcodes, lot numbers, and nutrition facts print in a full-bleed, from edge to edge on die-cut labels.

With the ability to halftone colors, the QLS-2000 Xe can print gradations of color that complement solid colors. With the ability to "reverse" print, the color of the label material itself can often be incorporated into label designs.

### VARIABLE PRODUCT TRACKING INFORMATION

The QLS-2000 Xe connects to a PC and prints labels directly from digital files, giving users the freedom to edit label content in software. Images, logos, text, database-linked fields, barcodes, lot numbers, and expiration dates can be edited "on the fly" or set to update automatically on successive labels. Finished labels print just moments after they are designed, so users can make changes whenever the need, or the whim, arises.

## QUICKLABEL® SYSTEMS

The Labels You Want When You Need Them

[www.QuickLabel.com](http://www.QuickLabel.com)

## SPECIFICATIONS

---

**Printing Method:** Thermal Transfer, Spot Color

**Print Stations:** Two printheads

**Print Speed:** 2"-5" per second (50mm-127mm)

**Resolution:** 304 dpi

**Maximum Print Area:** **Width:** 4.4" (112mm) from the inside edge of the label; **Length:** 44" with Windows®

Printer Driver; 22" with Custom QuickLabel®

**Thermal Transfer Ribbon Supply:** 2 rolls, each 984 ft. long (300m)

**Label/Tag Roll Capacity:** 10" Outside Diameter Maximum (254mm)

**Label/Tag Size:** Max. Width: 4.625" (117mm); Min. Width: 1" (25mm) Min. Length: 0.395" (10mm)

**Label/Tag Thickness:** 12 point maximum recommended (0.16", 0.007mm)

**Fonts:** 7 TrueType™ fonts resident, others can be downloaded to printer from PC

**Resident Barcodes:** All standard symbologies, including 2 Dimensional

**Control Panel:** Ergonomic Key Pad for Menu functions, Backlit LCD display

**Connectivity:** Platforms: PC, AS/400; Interfaces: High-Speed Parallel (Centronics) & Serial (RS-232)

**Software:** Windows® Driver Included; Custom QuickLabel® Label Creation Suite Optional

**Memory:** 128 MB RAM standard; 128 MB Flash Card included; up to 512 MB card accepted

**Dimensions:** 20" H x 17" D x 22" L (508mm x 432mm x 559mm)

**Weight:** 84 lbs. (38kg) (without label or ribbons)

**Power Requirements:** 120/240 VAC, 60/50 Hz, 400 Watts, 6.3/4.0A



## MANUFACTURER-DIRECT PRINTING SUPPLIES

---

QuickLabel customers know the value of purchasing from a manufacturer that sells direct. Because we develop printing supplies as well as printers, we take the guesswork out of choosing the right materials to print high-quality labels. We manufacture over 70 different label materials in thousands of die-cut shapes and sizes and a rainbow of printing ribbons, all developed to optimize the print quality of QuickLabel printers. With personal Media Product Specialists to assist you in selecting the right supplies to match your end-use, you'll be printing labels with your QLS-2000 Xe – *fast!*

## ACCESSORIES

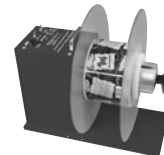
---



**Custom QuickLabel®:** Software for label creation and advanced print management.



**QuickWrap:** Semi-automatic label applicator allows operators to apply labels faster and more accurately.



**Label Rewinder:** Winds printed labels onto rolls ready for loading onto label applicator.

## QUICKLABEL® SYSTEMS

**The Labels You Want When You Need Them**

### World Headquarters

600 East Greenwich Ave., West Warwick,  
Rhode Island 02893  
toll free: 1.877.757.7978 / 401.828.4000  
e-mail: [info@QuickLabel.com](mailto:info@QuickLabel.com)  
[www.QuickLabel.com](http://www.QuickLabel.com)

### Factory Sales and Service Centers

Canada: 800-565-2216  
France: (+33) 1 34 82 09 00  
Germany: +49 (0) 6106-75033  
United Kingdom: 1628 668836  
USA: 877-757-7978